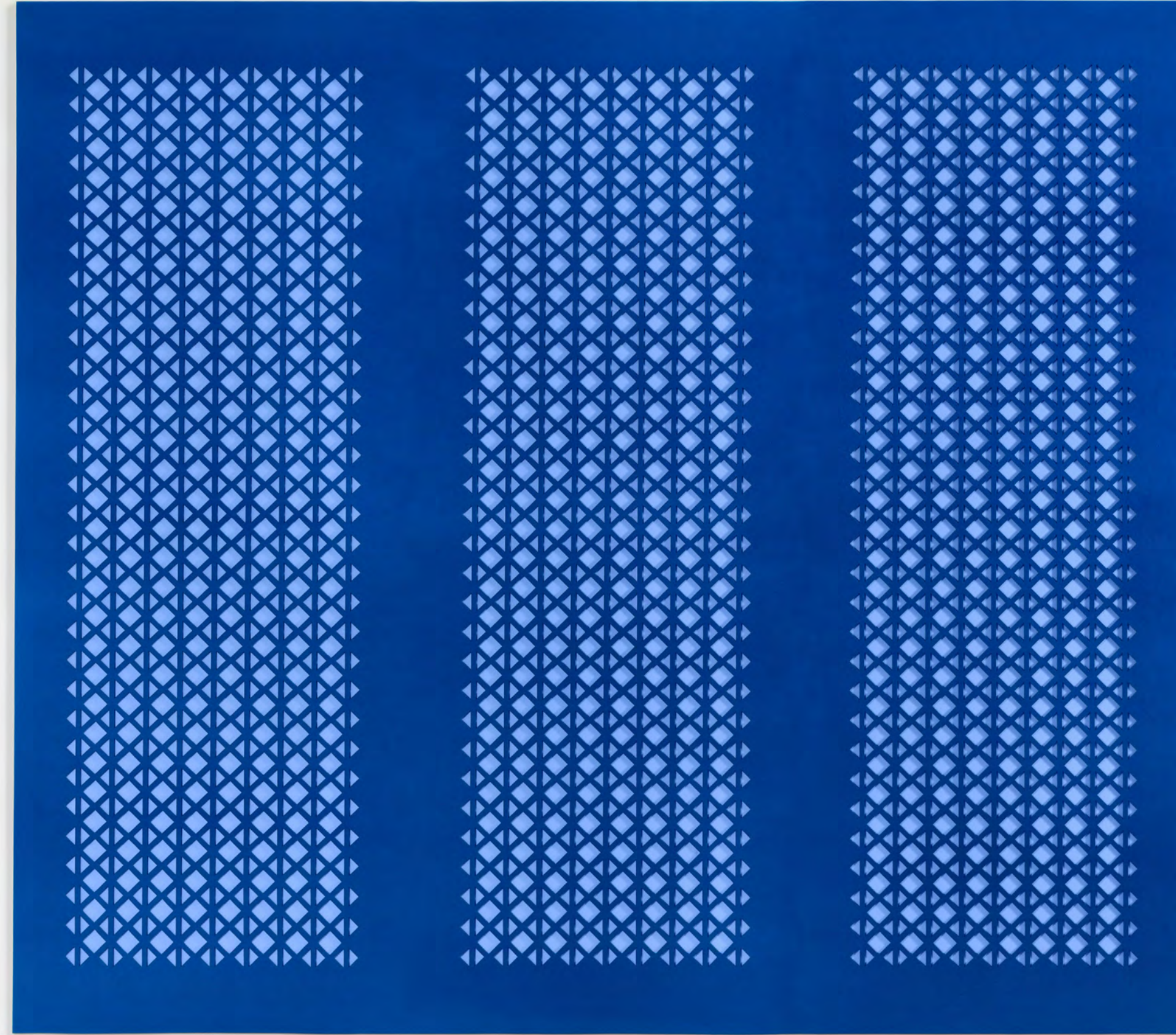


interior felt



Felt2Felt

1 Overview

5 Design Library

10 Installation

11 Color Range

12 Specifications

Overview

As the name implies, Felt2Felt panels combine two layers of our 100% Wool Designer Felt to give your designs depth, color contrast, or other unique traits. These panels are mainly used as a wall covering or an artwork-like accent piece. Their added depth provides not only greater acoustic outcomes but also an increased tactile allure.

Felt2Felt can be fabricated into CNC cut patterns and layered over top of the base felt. Colors and textures can be combined for added dimension and depth.





Princess Margaret Cancer Foundation

Featured Colors:
384 Charcoal

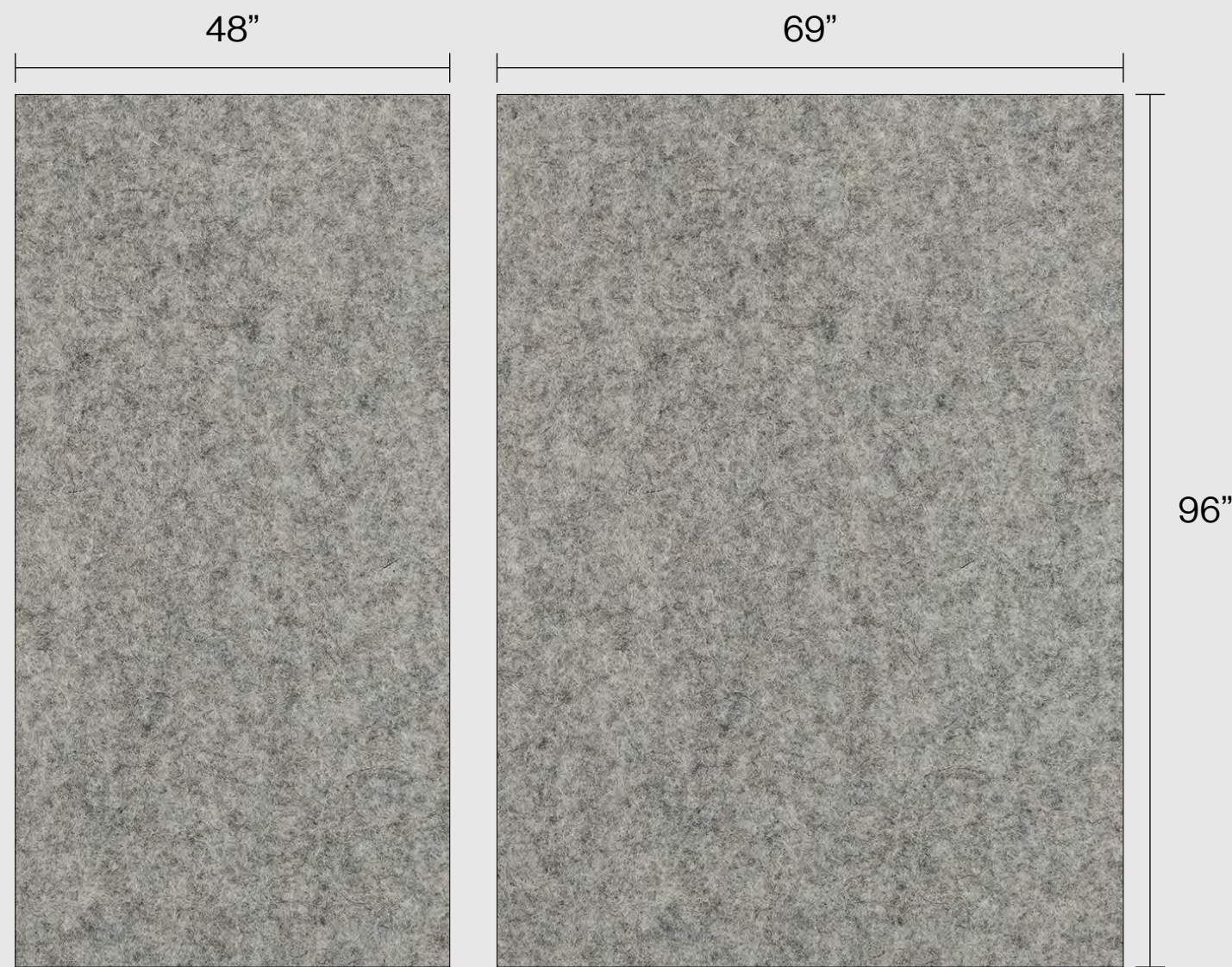
Featured Design:
Custom

The Toronto-based interiors firm Figure3 designed this elegant feature wall to offset the harder surfaces of the Princess Margaret Cancer Foundation offices. It also guides visitors toward the cafeteria and meeting areas. Our custom Felt2Felt panels add a soft finish and, by indirectly evoking cells, the composition nods to the essential scientific work funded by this nonprofit organization.

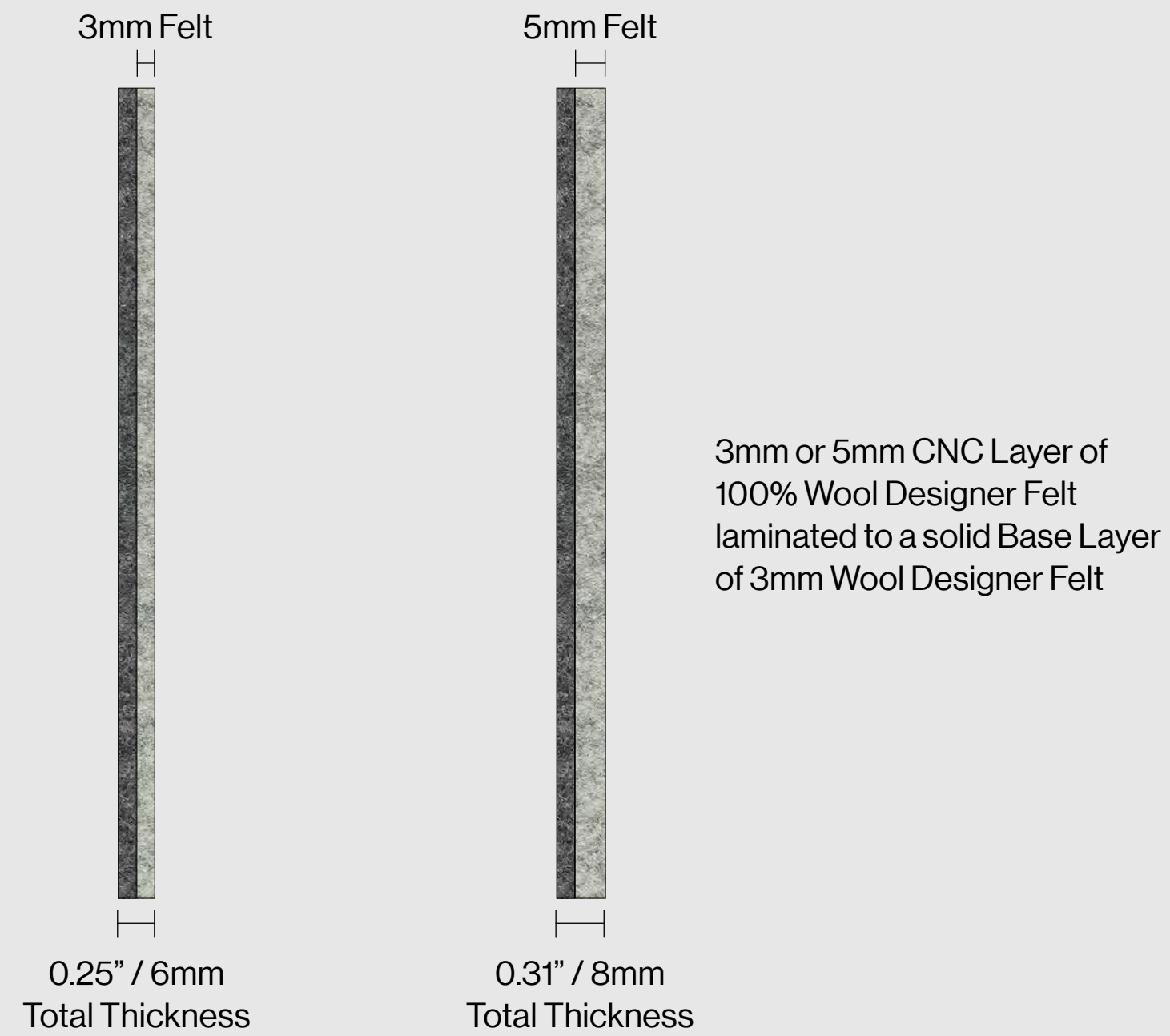
Dimensions & Details

Felt2Felt is available in two standard sizes and thicknesses. As with all our products, we offer standard designs but can also partner with designers to develop custom solutions in any size up to 69" × 119".

Standard Sizes



Side Elevation



Summary

- Thickness**
- Total thickness: 0.25" / 6mm or 0.31" / 8mm (nominal)
 - CNC Layer: 0.118" / 3mm or 0.2" / 5mm (nominal)
 - Base Layer: 0.118" / 3mm (nominal)

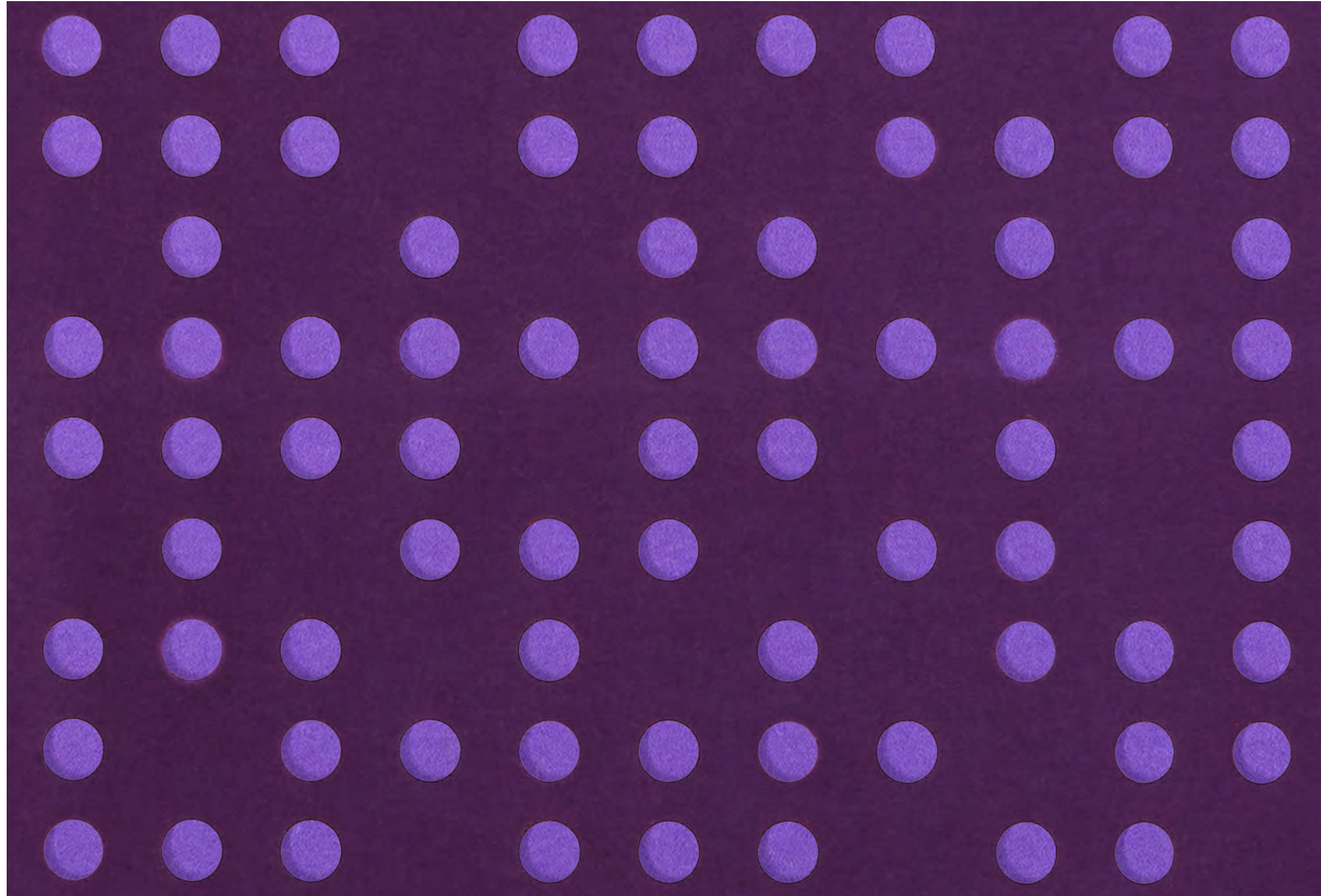
- Standard Sizes**
- Width: 48" / 69"
 - Height: 96"
 - Maximum dimensions: 69" W x 119" H
 - Custom sizes upon request

Edge Detail
Exposed Edge

Custom
For custom designs please inquire.

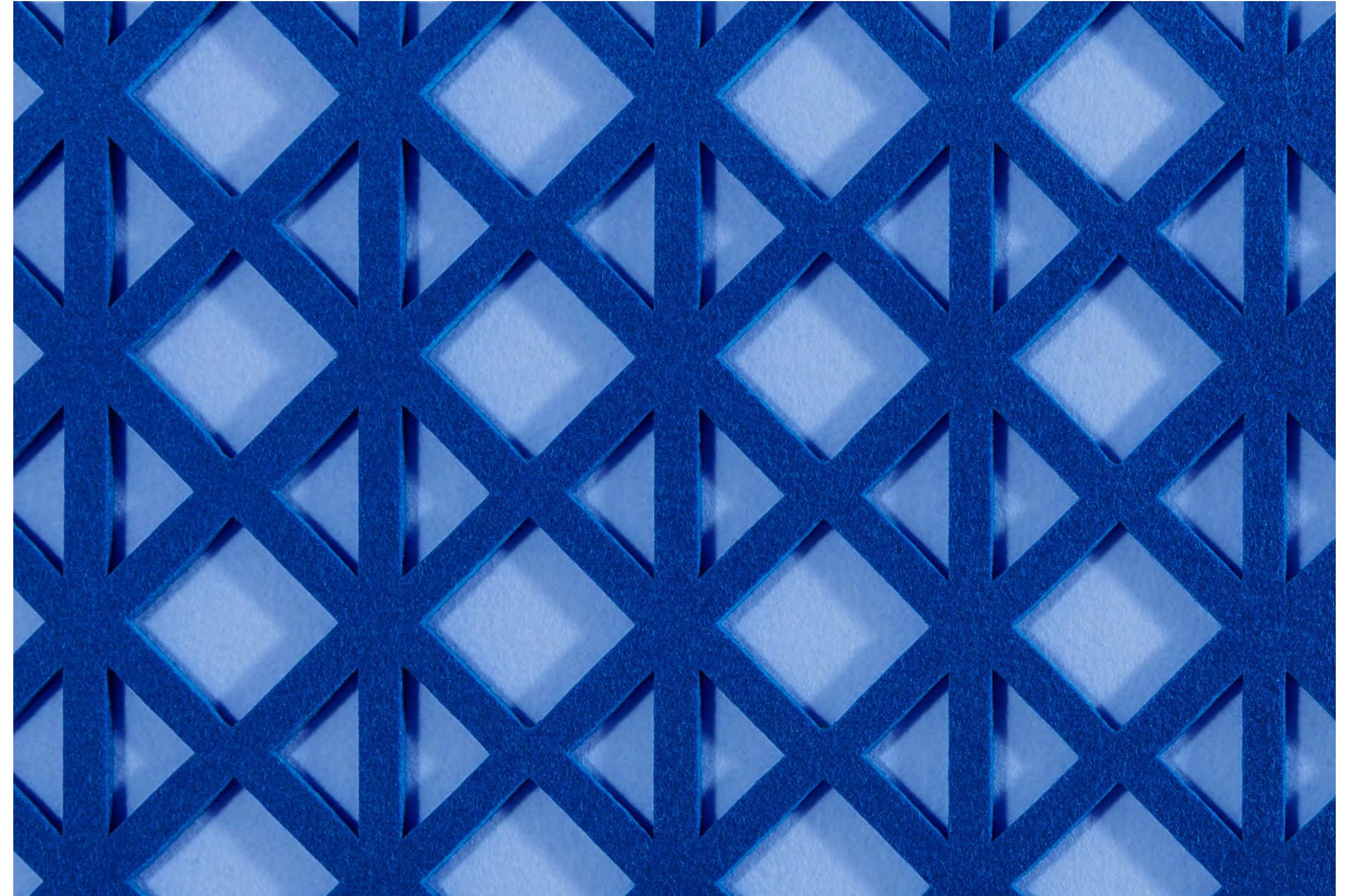
Flammability
Test reports available upon request.

Geometric Collection



Our geometric patterns enhance a wide range of interior spaces, adding subtle design elements that provide texture, depth, and a visually engaging experience. These timeless arrangements of lines and shapes complement various design styles.

Designer Collection



Our Designer Collection provide unique character and tactile dimensions within any space. By combining colors and utilizing the material's depth, this collection ranges from playful and organic to structured and architectural designs.

Design Library

Geometric Collection

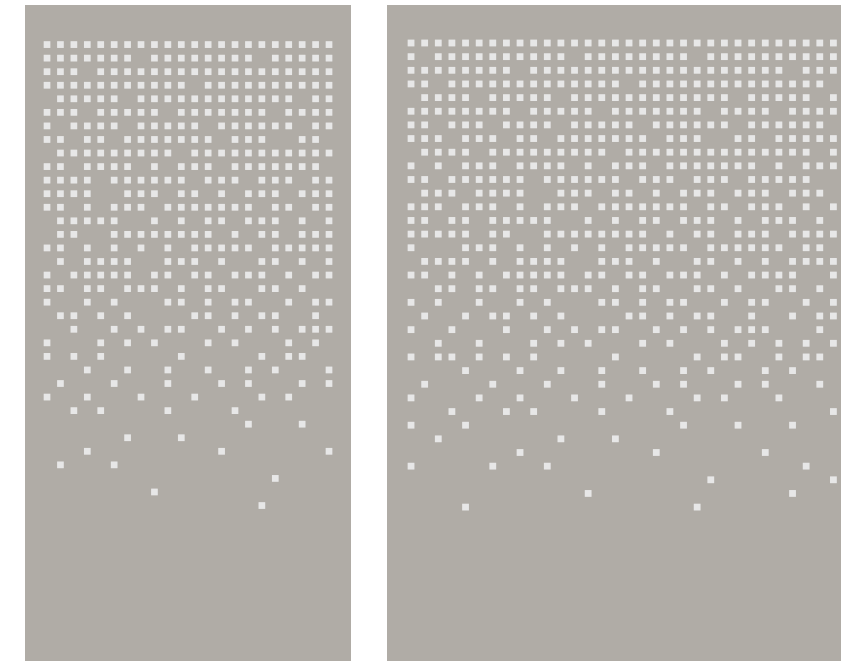
Fading Squares

Detailed View



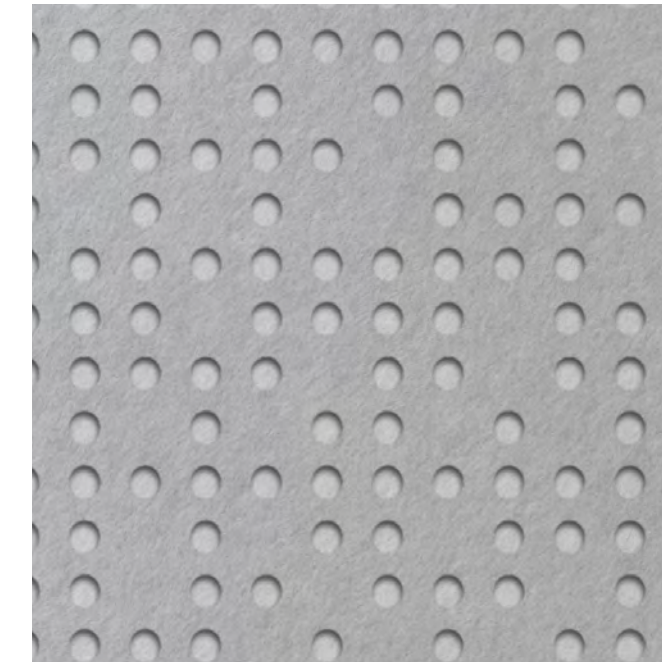
48"

69"



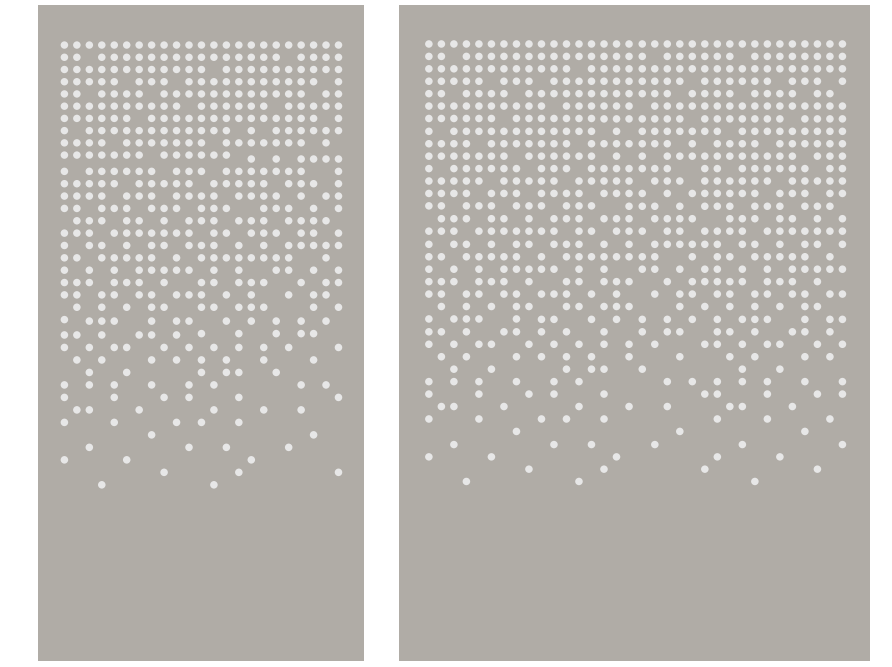
Fading Circles

Detailed View

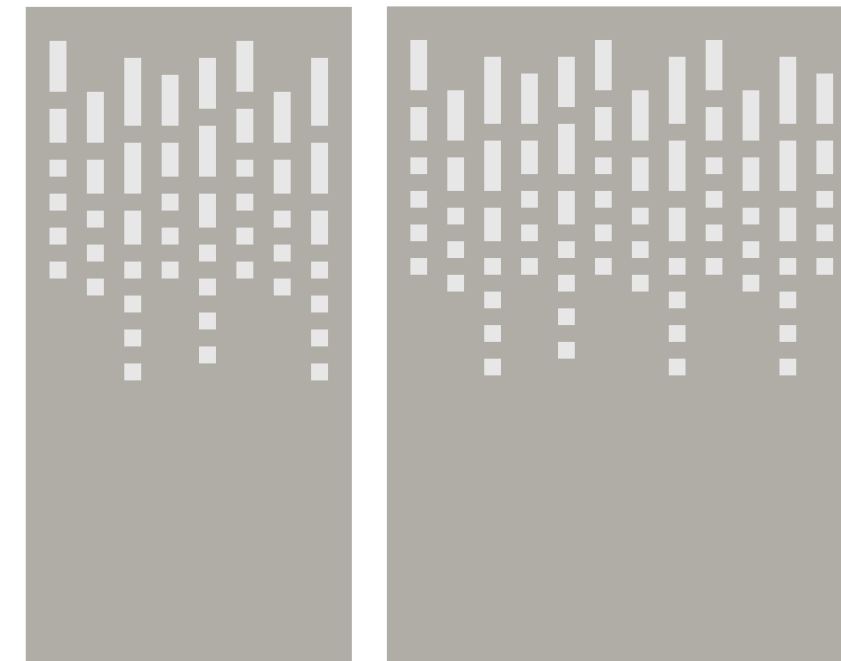
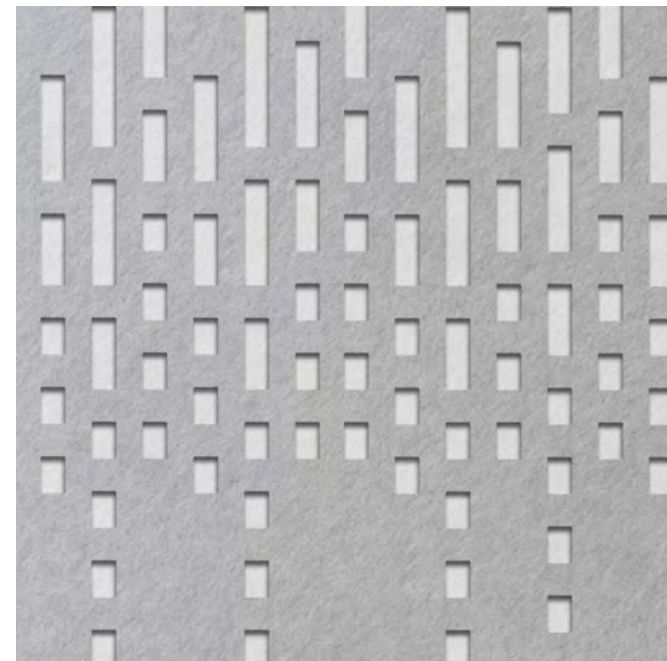


48"

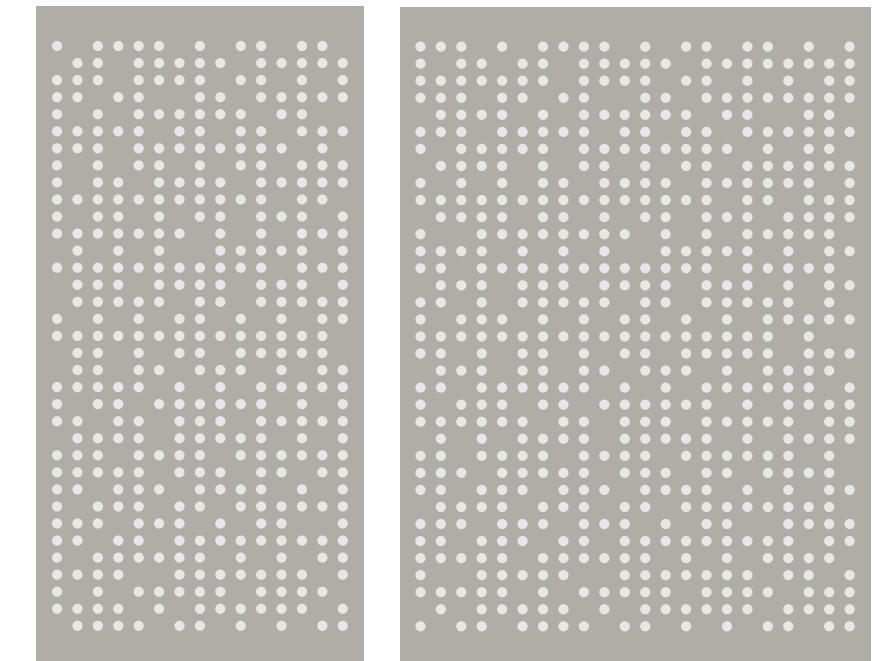
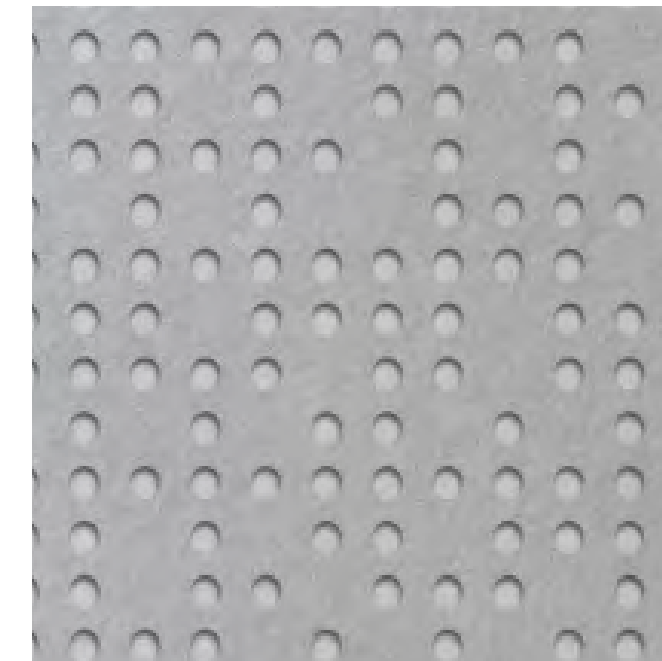
69"



Fading Rectangles



Circles

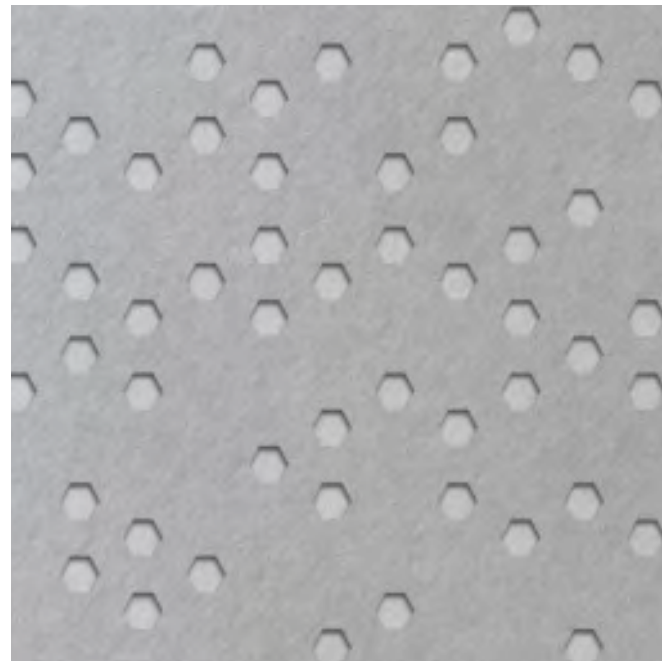


Design Library

Geometric Collection

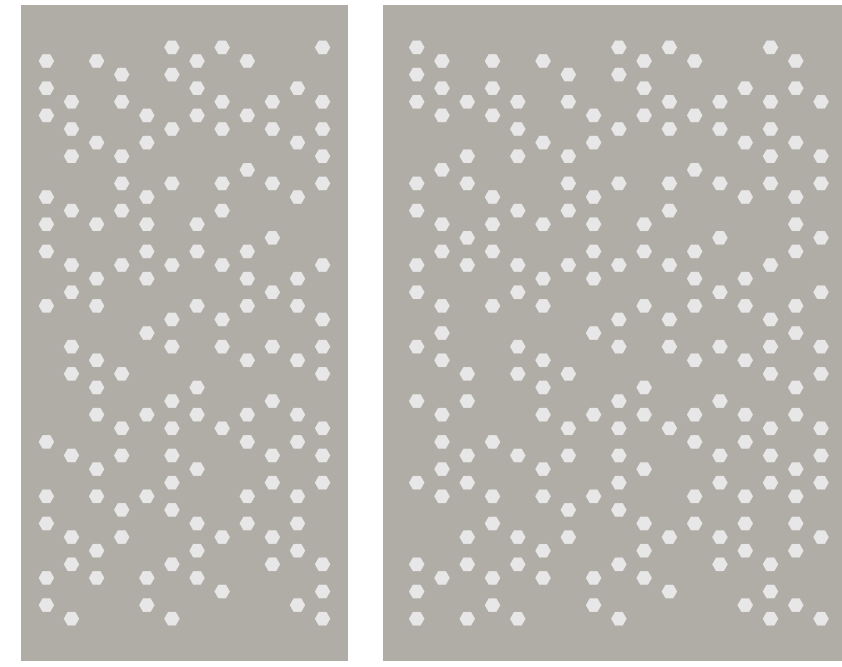
Hexagons

Detailed View



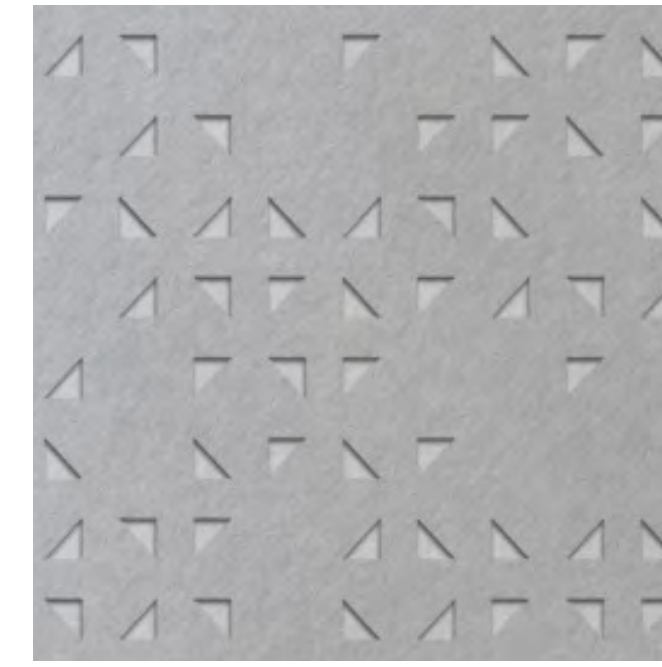
48"

69"



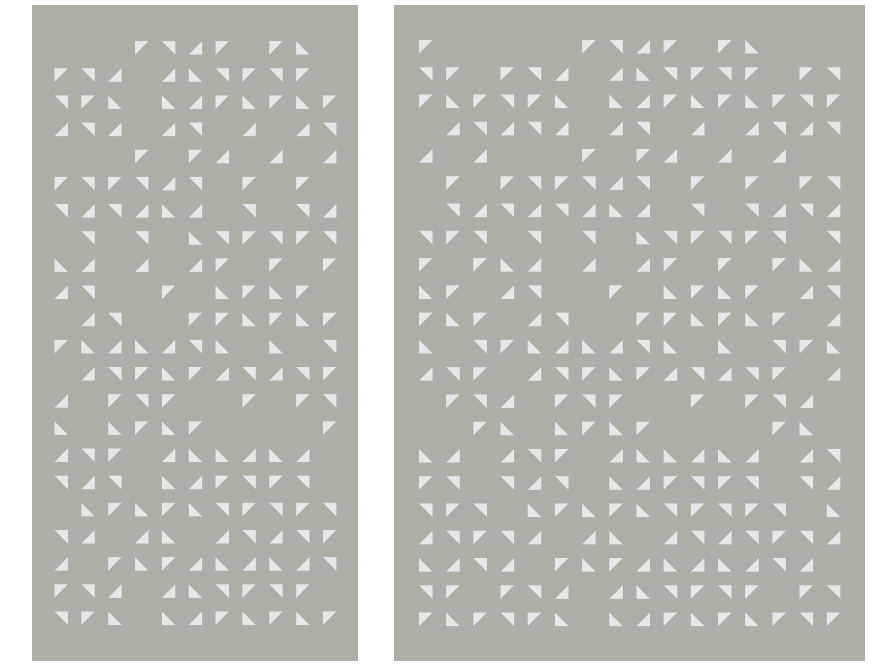
Triangles

Detailed View

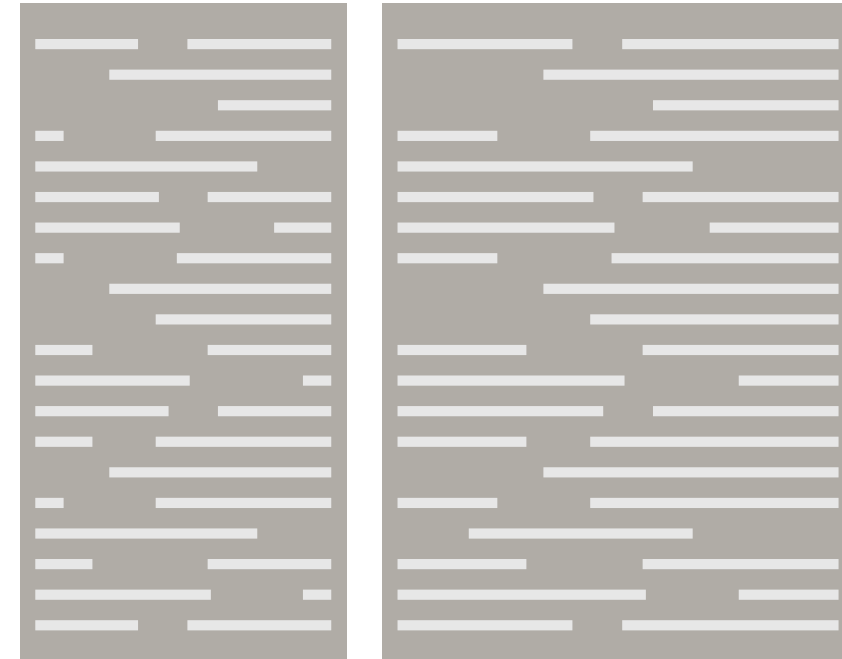


48"

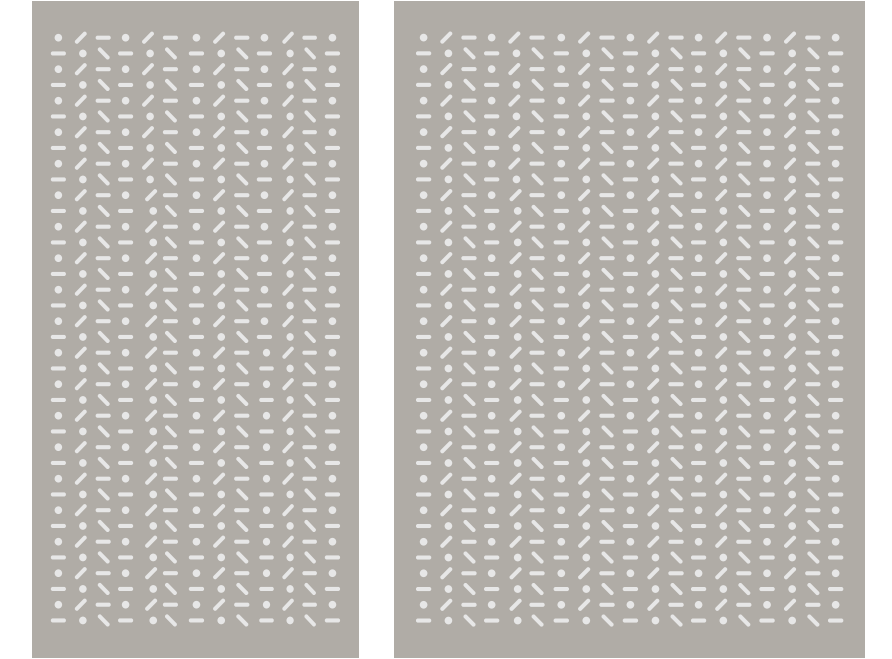
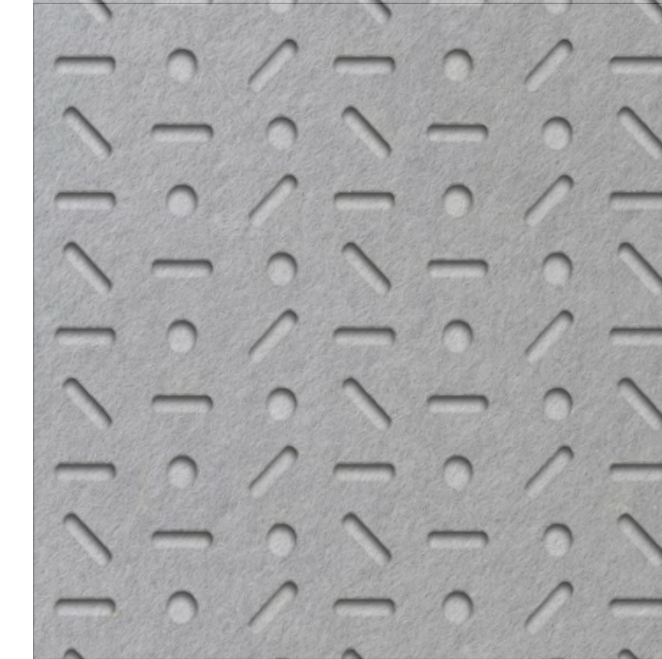
69"



Horizontal Rectangles



Capsules

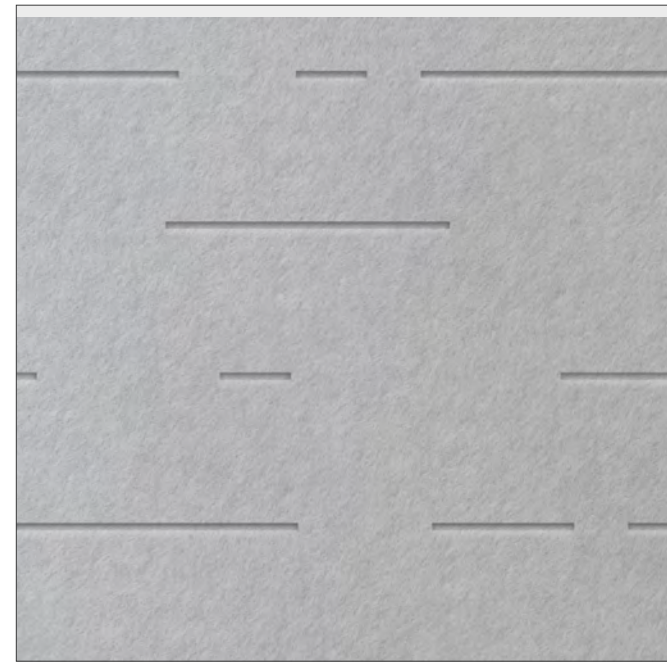


Design Library

Designer Collection

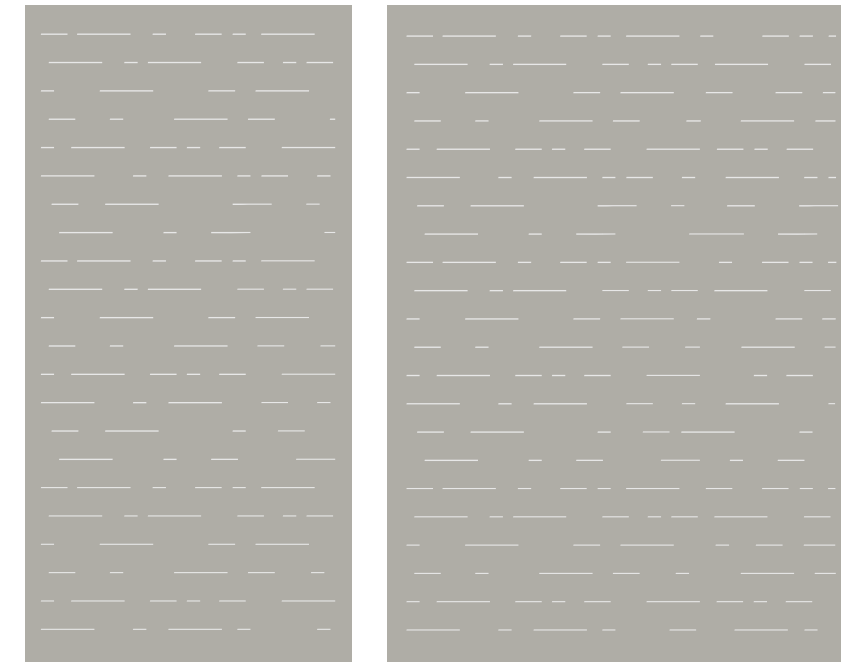
Birch

Detailed View



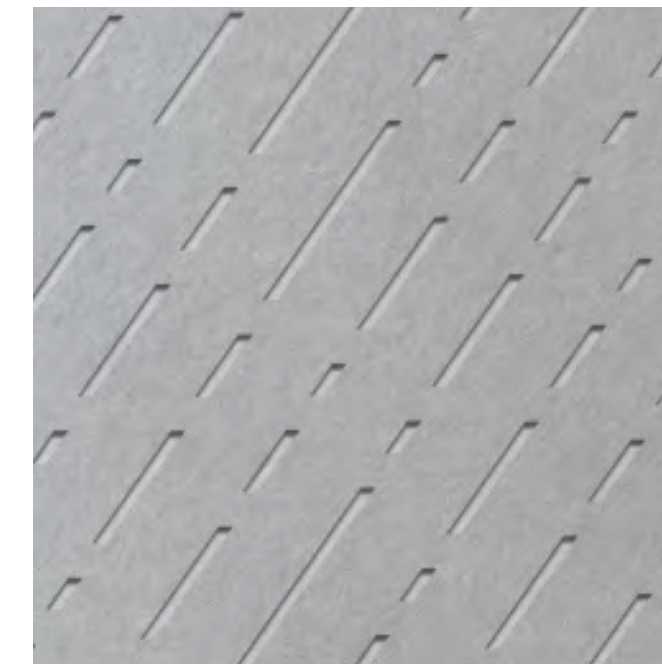
48"

69"



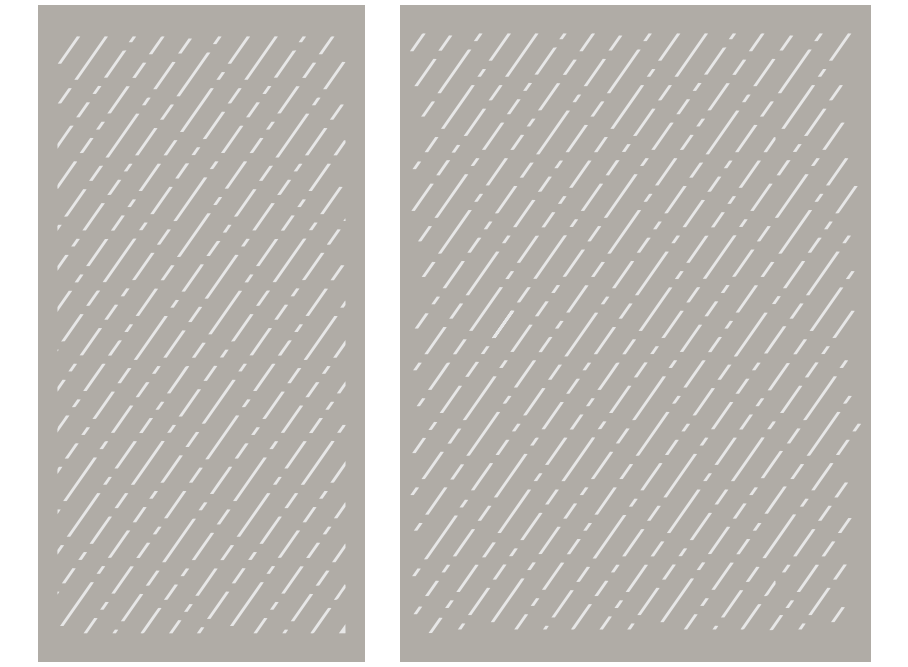
Rain

Detailed View

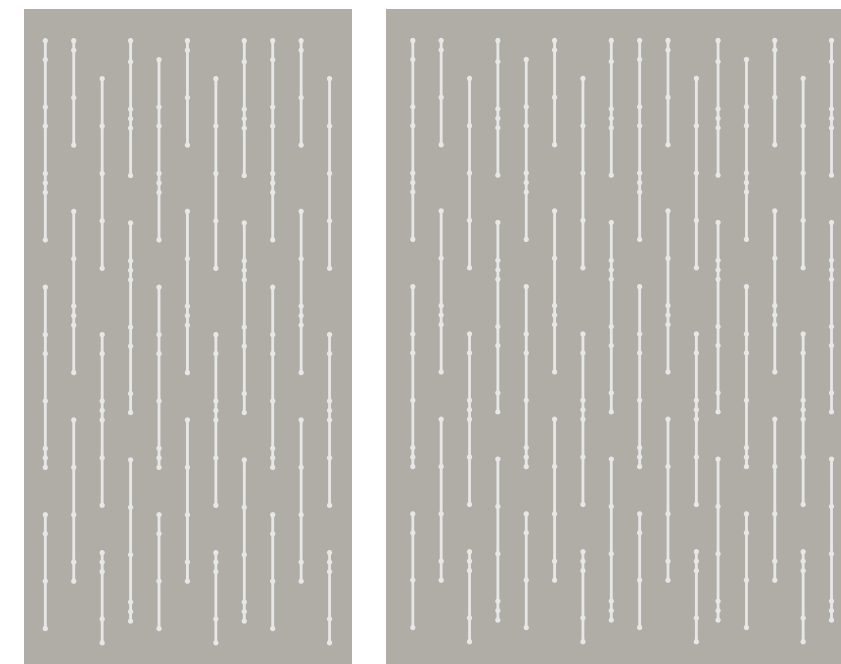
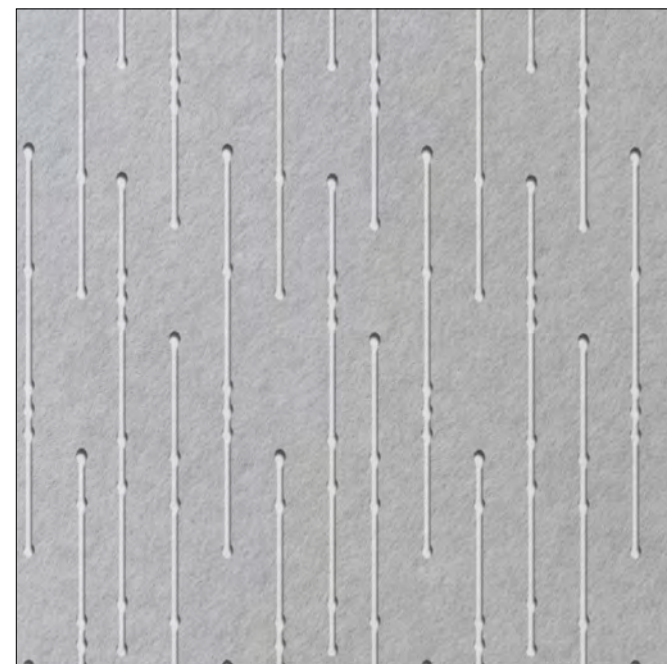


48"

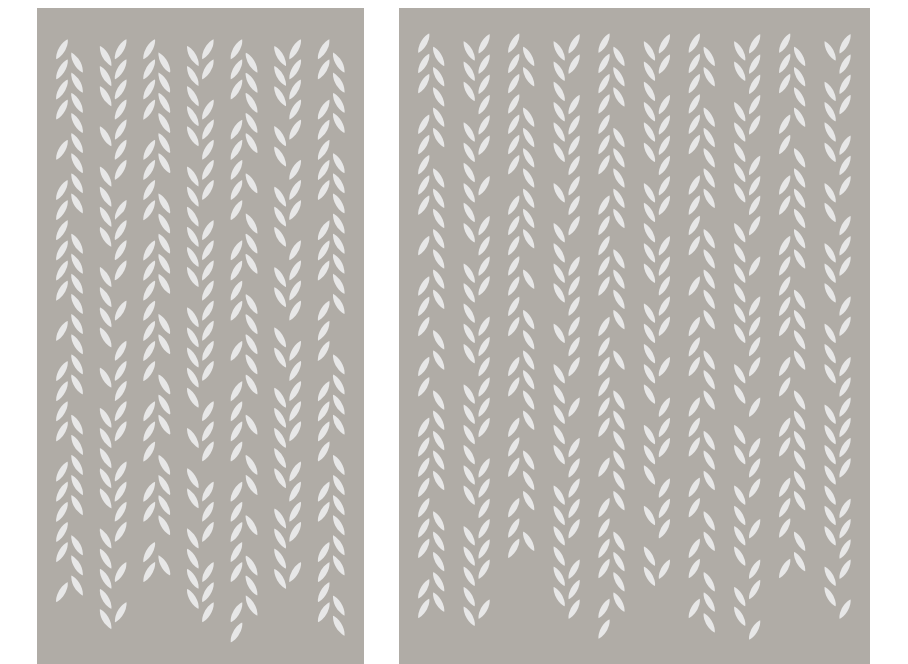
69"



Pathway



Willow

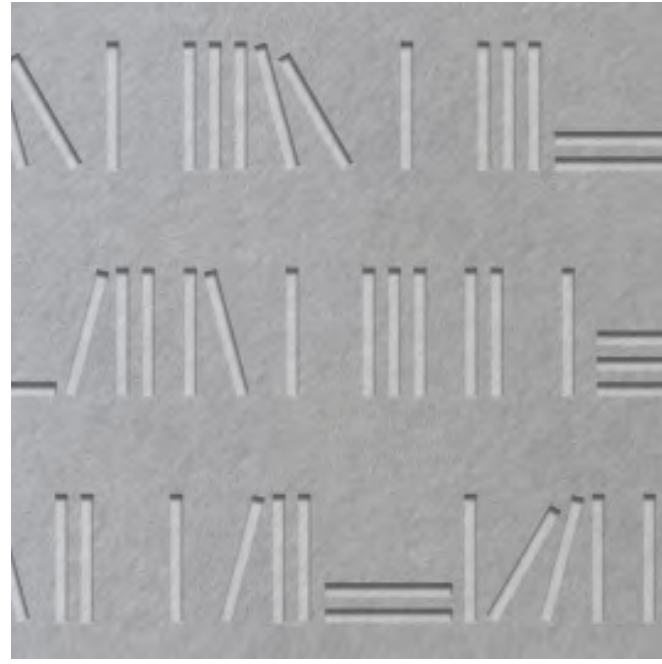


Design Library

Designer Collection

Library

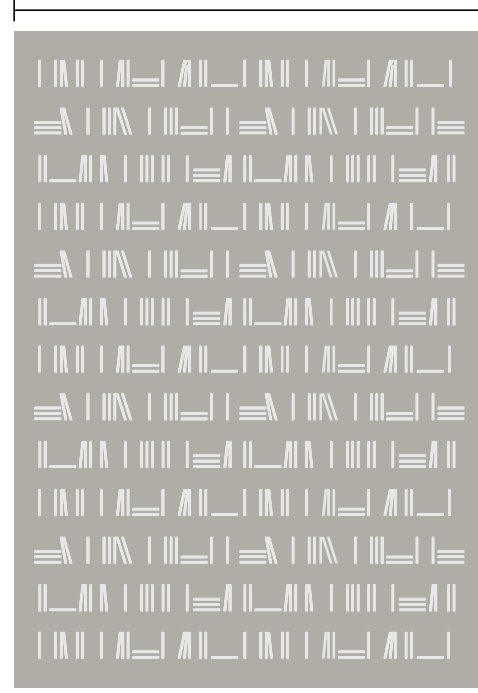
Detailed View



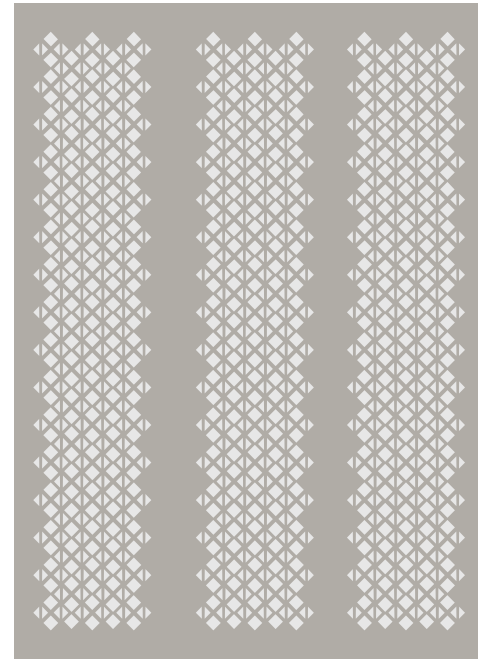
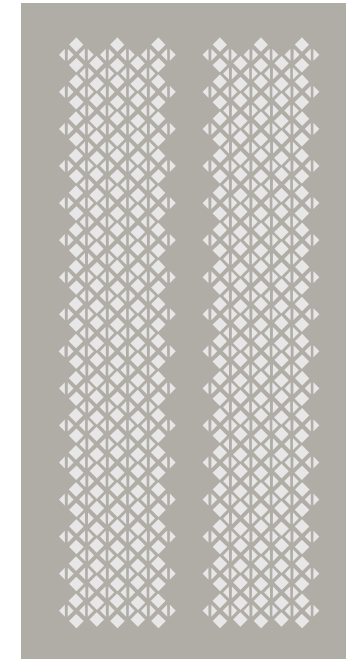
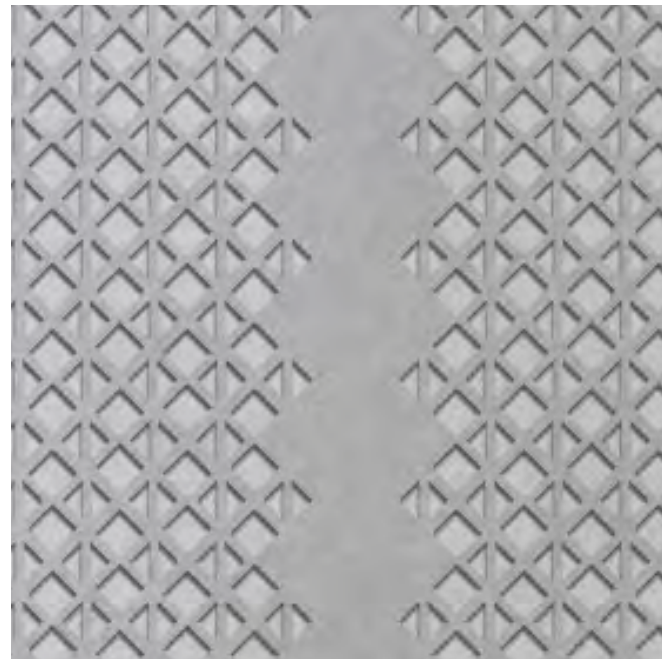
48"



69"



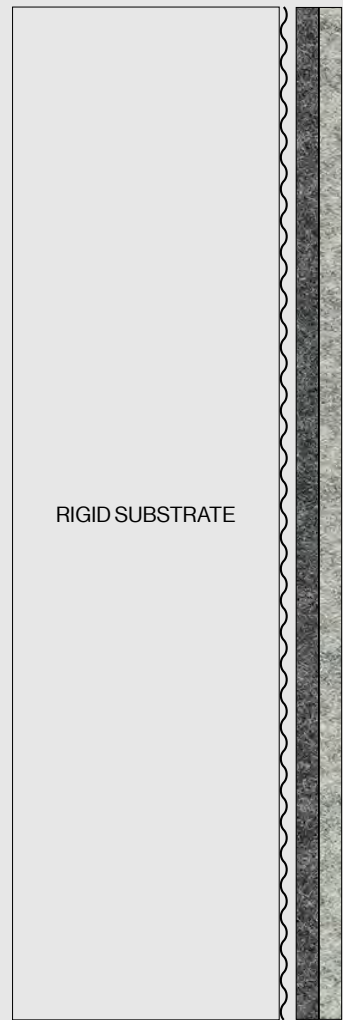
Thomson



Felt2Felt Installation

Felt2Felt is installed like standard rolled felt wall coverings. We recommend a glue direct application using a superior wallpaper adhesive with low water content. Felt2Felt panels can be installed tightly together to create a monolithic wall surface. This allows large surface areas to be covered with minimal visual seams.

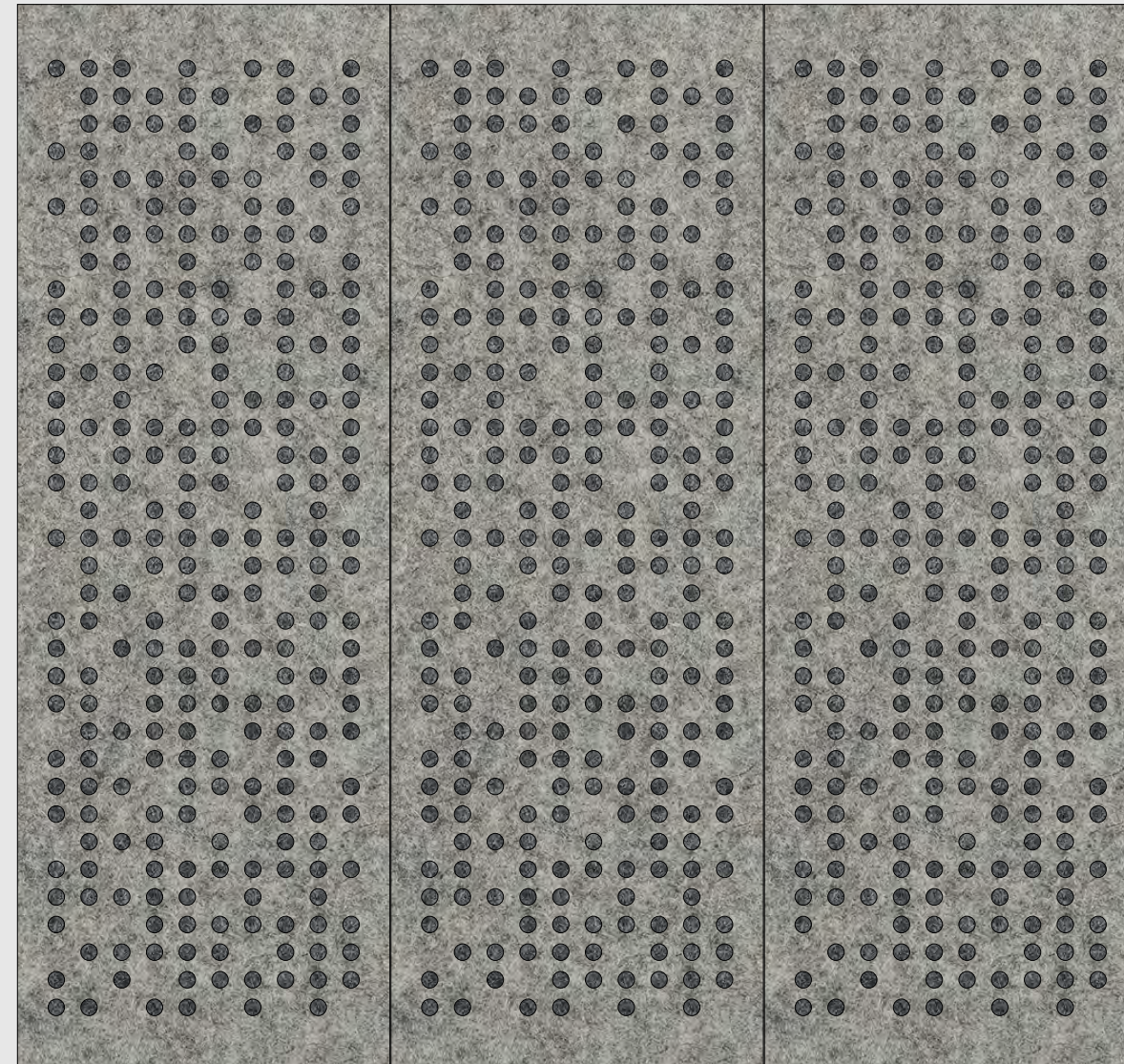
Installation



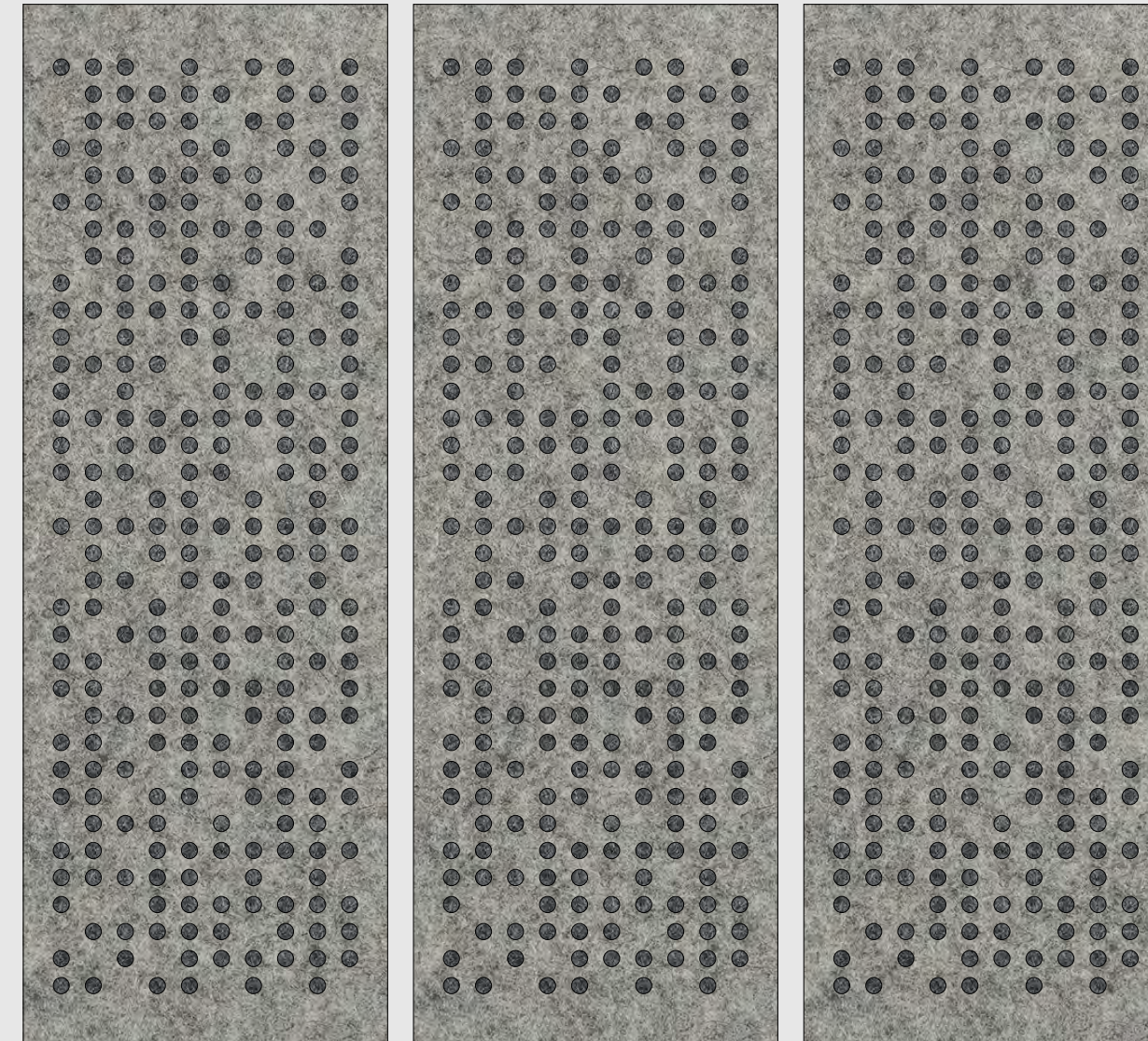
Apply appropriate adhesive* to substrate and place the Felt2Felt in the desired configuration. Be mindful of the exposed edges.

Adhesive

Edge-to-Edge Installation



Border Installation



*Installer must choose adhesive specific to substrate and on-site conditions.

Wool Designer Felt

111 - White
3mm

311 - Wool White
3mm

312 - Raw White
3mm

146 - Rose
3mm

271 - Sierra Brown
3mm

382 - Pebble Gray
3mm

381 - Concrete Gray
3mm

383 - Stone Gray
3mm

182 - Storm Gray
3mm

384 - Charcoal
3mm

183 - Black
3mm

186 - Overcast
3mm

272 - Sand
3mm

157 - Mint
3mm

221 - Vanilla
3mm

122 - Canary
3mm

121 - Citrus
3mm

231 - Burnt Orange
3mm

123 - Dijon
3mm

156 - Moss
3mm

275 - Cashmere
3mm

371 - Burnt Oak
3mm

152 - Olive
3mm

251 - Meadow Green
3mm

184 - Aqua
3mm

261 - Sky Blue
3mm

185 - Mist
3mm

158 - Peacock
3mm

164 - Electric Blue
3mm

162 - Arctic Blue
3mm

154 - Teal
3mm

155 - Forest Green
3mm

163 - Midnight
3mm

145 - Lavender
3mm

143 - Aubergine
3mm

142 - Fuchsia
3mm

141 - Burgundy
3mm

134 - Cherry
3mm

135 - Copper
3mm

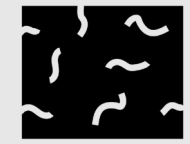
133 - Bright Red
3mm

Custom

We collaborate with designers and architects, offering our expertise to guide ideas from concept to creation through the unique possibilities of wool felt. As a non-woven material, felt lends itself to intricacy and elegance beyond the reach of other textiles—an ideal medium for refined, expressive design in a soft finish.

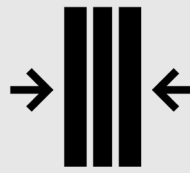
Custom thickness and colors available upon request.

Felt2Felt Specifications



Content

100% Wool Designer Felt

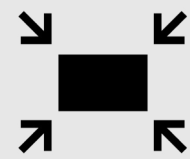


Panel Thickness

Total thickness: 0.25" / 6mm or 0.31" / 8mm (nominal)

CNC Layer: 0.118" / 3mm or 0.2" / 5mm (nominal)

Base Layer: 0.118" / 3mm (nominal)



Standard Sizes

48" wide x 96" long / 1219mm wide x 2438mm long

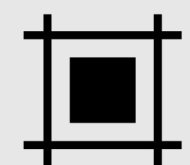
69" wide x 96" long / 1753mm wide x 2438mm long

*All dimensions nominal - custom sizes available - maximum size 69" wide x 199" long / 1753mm wide x 3023mm long.



Unit of Sale

Sold by unit - Unit of measurement: Each



Design

12 Standard Designs available. Custom designs available up to 69" W x 119" H.



Weight

Approximately 0.4lbs to 0.5lbs per square foot.



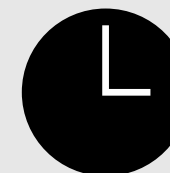
Durability

Contract



Edge Detail

Exposed Edge



Lead Time

All product is made to order.

Please inquire for current lead times.



Installation

Glue Direct



Custom

Custom designs and sizes available to maximum dimensions: 69" x 119" . Please inquire for more information.

Felt2Felt Specifications



Environmental

100% Wool Designer Felt



Oeko-Tex® Standard
100 Product Class



LEED® Credit
Contributor
Biodegradable



100%
VOC Free

Declare.

LBC
Red List Free



Variation

With wool felt being a natural material there may be natural variation within the material. This may include rare colored dots known as Smit Marks, color variation due to the natural wool color variation and the absorption of dyes, or fine vegetable matter. Complete color consistency is not guaranteed nor can it be expected, however if particular areas of a project site require higher consistency please inform us well in advance and we can do our best to accommodate by supplying similar dye lots when possible.



Acoustics

Please reach out for consultation.



Colorfastness to Light

Class 4-5



Flammability

Reports available upon request.

Felt2Felt Specifications



Maintenance

Handle with care. To remove any accumulation of airborne particles, Interior Felt products can be occasionally vacuumed with an upholstery brush, brushed by hand or with a lint brush or roller. When dusting, it is normal to encounter a slight shedding of fibers. These loosened fibers are not a sign of any defect and will decrease over time.

Wet spills should be blotted up as soon as possible with a dry cloth. All wool fibers have a naturally-occurring fatty coating called lanolin. This substance makes wool water-repellent and provides inherent stain resistance. Felt is not waterproof, but its inherent resistance to liquids creates some delay time before spills soak through and cause a stain.

Other wet spills may be spot cleaned with warm water or a mild dry-cleaning solvent. Clean soiled areas gingerly to avoid warping the felted surface.

Helpful Tips:

We strongly recommend testing any cleaning method on spare material or less visible areas first.

In addition to occasional dusting, felt products may need to be vacuumed once per year.

If stains cannot be removed with spot cleaning, we recommend seeking professional dry cleaning services that have experience with wool.

interior felt

Contact

1844 312 3358
sales@interiorfelt.com
interiorfelt.com

Our Headquarters

2559 Wharton Glen Ave.,
Mississauga, Ontario
L4X 2A8, Canada

Our US Office

1971 Abbott Rd., Bay 2
Lackawanna, New York
14218, USA

Our Warehouse

1735 Mattawa Ave., Unit 2
Mississauga, Ontario
L4X 1K5, Canada

